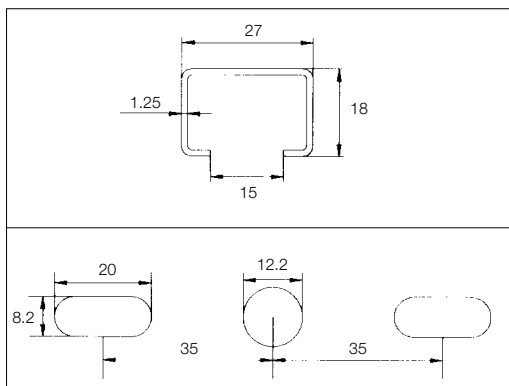
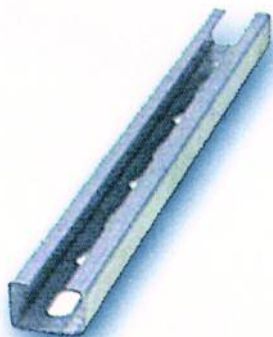


PERFORATED CHANNEL (27/18) PROFILE

- Steel channel with fixed and sliding longitudinal mounts.
- 27mm (W) x 18mm (H) x 15mm (opening)
- Compact channel with high load capacity and low flex.
- Slide-in (*CombiFix*) or “push & twist” direct access fittings (RailBolt).
- End caps for rail protection and encapsulation of fittings.
- 2 metre lengths. Cut to size to suit applications.
- Choice of anchoring methods from screw-in or mechanical anchors (medium/heavy duty) to *Pulsa* gas pin assembly (light/medium duty).



Order No	Dimension	Length (mm)	Order Qty
333030RA	27/18 (Perforated)	2000	12

Ramset recommends application tests on-site before commencing use.

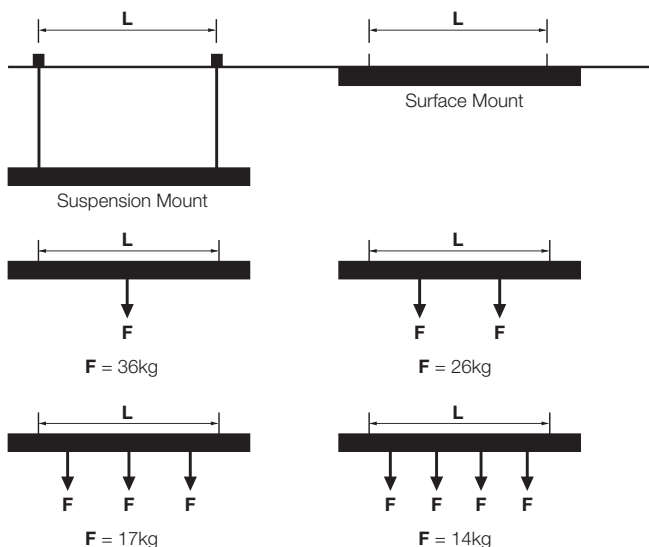
TECHNICAL CHARACTERISTICS

- Steel thickness 1.25mm.
- Galvanised finish for long life.
- Hot rolled low carbon steel to EN10051.

Profile	Weight	Section
27/18	.54 kg/m	.72 cm ²

LOAD CAPACITY OF PROFILES

Maximum spacing between supports. (L = 500mm).



NOTE:

Channel tensile stress limited to 140Mpa.
Maximum deflection at tabled loads = 3mm.
Ramset recommends application tests on-site before commencing use.

CHANNEL INSTALLATION AND ANCHORING:

Use anchors to suit the application and load requirements

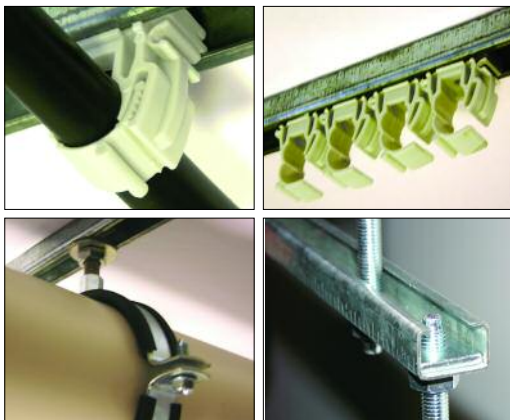
- Screw-in anchor 5x30mm Hex. (See AS05030H on page 88). Use with DD514 Drill Driver for fast, low cost installation. (See page 66).
- DynaBolt sleeve anchor 6mm. (See page 84 for details).
- Pulsa Gas Pins with washer assembly. (See page 26 for details).



PIPE SUPPORT AND MOUNTING

Channel mounted systems are ideal for applications requiring different pipe types, sizes and materials.

- Faster installations, Lower installed costs.
- Less parts, less anchors, no drilling.
- Use in conjunction with Channel for permanent or temporary pipe services fixed to walls, ceilings or floors.
- Add or remove fittings as required.



CLAMP SUPPORTS AND ACCESSORIES:

Double Thread Short Bolt

- Slotted head for easy installation close to surface.
- Suits flanged drop-in anchors and nut mounting plates.
- Screw-on pipe clamps to suit.



Order No	Dimension (mm)	Order Qty
618001	M6/M6	100
618002	M6/M8	100

T Bracket (for Band Clamps)

- Close to ceiling/wall mount.
- Suits hanging strap. • Nut/bolt included.



Order No	Description	Order Qty
BCTBK	Band Clamp T Bracket	100

Performance Table - Load capacity (tension) 35MPa Concrete

Item	AnkaScrew 5 x 30 Hex	SC620 Pin with SPMW
Bolt Plate 386103	150kg	14kg
Nut Plate 335122	150kg	14kg

NOTE: Test concluded when plate tears at fixing holes or anchor failure. Job-site testing may be required to determine actual achievable job-site values. Accessories failing to fix correctly should be removed and a new fixing set away from any spalled concrete. Tension loads provided are for static load situations only. Values represent a minimum factor of safety of 3:1 based on the test results achieved. Minimum edge distance 75mm, minimum spacing between fixings 50mm. Tension loads are per plate, however a minimum of 3 plates per fastening unit should be used.

SUGGESTED CHANNEL ACCESSORIES:

Combination Clip with strap pg 23

- “Slide-on” to Channel. • Add or remove clamps.
- Rigid clamping and pipe support. Strap can be opened.
- Suits pipe sizes from 12 to 50mm outer diameter.
- Male/female connections for multiple pipe installations.



Rail Bolt

- For installation of pipe clamps or eye coupling.
- High strength, welded bolt assembly (patented).
- “Push and Twist” mechanism to locate bolt in the channel.
- Fit after channel installation at any position.
- Spring mechanism keeps bolt in position, ready to tighten.



Order No	Size	Profile	Order Qty
334620	M6 x 20	27/18	100
334930	M10 x 30	27/18	100

Rail Plate Nut (M10)

- For tiered channel suspensions.
- Rectangular nut for mounting threaded rod to channel rail.
- Used at the end of channel mounting positions for easy access and rod assembly.
- Use with hex nut/washer to clamp rod to channel.



Order No	Thread Size	Profile	Order Qty
436181	M10	27/18	100

Rail Protection End Cap

- For channel rail protection.
- Encapsulates “slide-on” fittings.
- Push-on, pull-off plastic cap.



Order No	Profile	Order Qty
438227	27/18	100

CLAMP SUPPORTS AND ACCESSORIES:

Welded Nut Plate

- Cut rod length to suit. • Use with double thread short bolt.
- High strength. • Fast installation.



Order No	Nut	Order Qty
335122	M8/10	100

Welded Bolt Plate

- Close to ceiling/wall fix. • Fast installation.
- High strength. • Screw-on pipe clamps.



Order No	Bolt	Order Qty
386103	M10x30mm	100

Hanging Strap (for Band Clamps)

- Suits T Bracket. • Nut/Bolt included.



Order No	Description	Order Qty
BCS300	300mm Hanging Strap perforated	50

Clevis (for Band Clamps)

- Height adjustment for correct pipe gradient.



Order No	Description	Order Qty
BCC10	Band Clamp Clevis M10	100