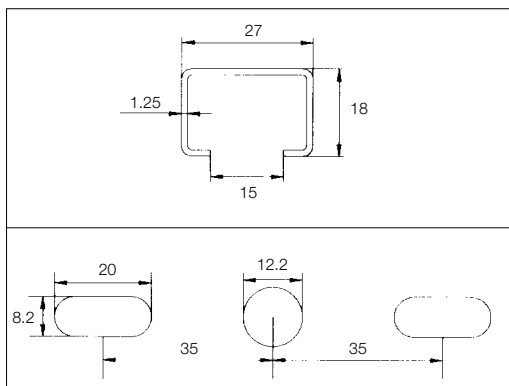
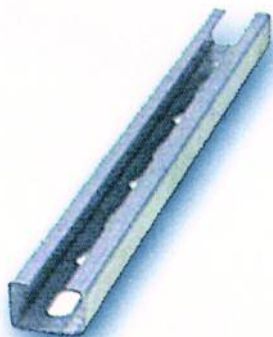


PERFORATED CHANNEL (27/18) PROFILE

- Steel channel with fixed and sliding longitudinal mounts.
- 27mm (W) x 18mm (H) x 15mm (opening)
- Compact channel with high load capacity and low flex.
- Slide-in (*CombiFix*) or “push & twist” direct access fittings (RailBolt).
- End caps for rail protection and encapsulation of fittings.
- 2 metre lengths. Cut to size to suit applications.
- Choice of anchoring methods from screw-in or mechanical anchors (medium/heavy duty) to *Pulsa* gas pin assembly (light/medium duty).



Order No	Dimension	Length (mm)	Order Qty
333030RA	27/18 (Perforated)	2000	12

Ramset recommends application tests on-site before commencing use.

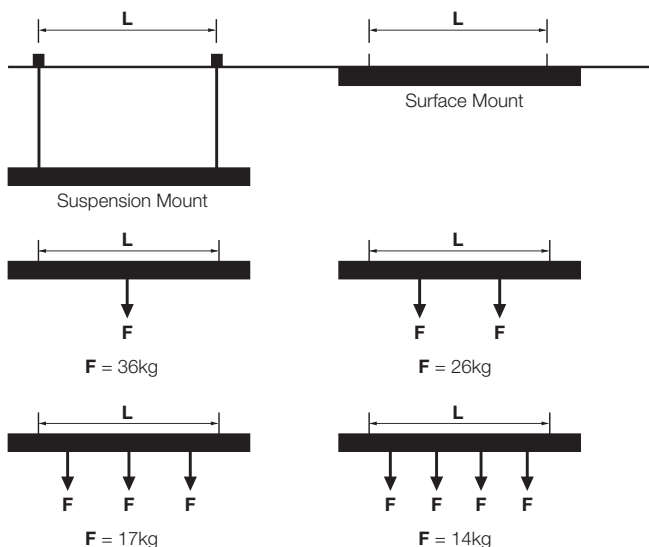
TECHNICAL CHARACTERISTICS

- Steel thickness 1.25mm.
- Galvanised finish for long life.
- Hot rolled low carbon steel to EN10051.

Profile	Weight	Section
27/18	.54 kg/m	.72 cm ²

LOAD CAPACITY OF PROFILES

Maximum spacing between supports. ($L = 500\text{mm}$).



NOTE:

Channel tensile stress limited to 140Mpa.
 Maximum deflection at tabled loads = 3mm.
 Ramset recommends application tests on-site before commencing use.

CHANNEL INSTALLATION AND ANCHORING:

Use anchors to suit the application and load requirements

- Screw-in anchor 5x30mm Hex. (See AS05030H on page 88). Use with DD514 Drill Driver for fast, low cost installation. (See page 66).
- DynaBolt sleeve anchor 6mm. (See page 84 for details).
- Pulsa Gas Pins with washer assembly. (See page 26 for details).

