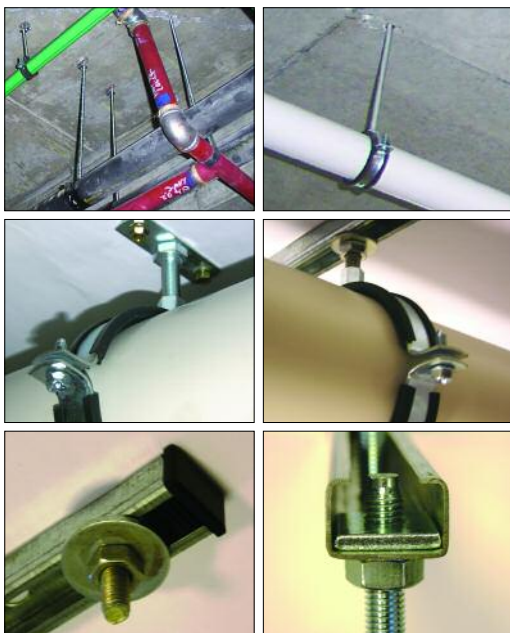



ISOPHONIC PIPE CLAMP (M8/M10)

For PVC, HDPE, Steel and Copper pipe. Where a high performance, Heavy to Extra Heavy Duty installation is required.

- Choice of close to ceiling, rod suspension or channel mount systems.
- For pipe outer diameters from 53 to 405mm.
- Horizontal, vertical and overhead.
- Sound, vibration and electrolysis protection.
- Suits water, waste, drainage, gas and stormwater pipes.
- Choice of M8 or M10 threaded rod mounting.
- No loss of side screws with plastic washers.
- 2 piece, 2 screw clamp.

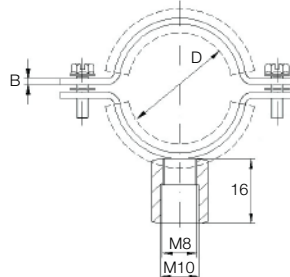


| Order No | Nominal Pipe Diam (mm) | OD Size Range D (mm) | Material Size A (wide) x B (thick) (mm) |  Order Qty |
|----------|------------------------|----------------------|---|---|
| 115054 | 50 | 53 - 56 | 20 x 2.0 | 25 |
| 115070 | 65 | 68 - 72 | 20 x 2.0 | 25 |
| 115083 | 80 | 81 - 86 | 20 x 2.0 | 25 |
| 115110 | 100 | 107 - 112 | 20 x 2.5 | 25 |
| 115160 | 150 | 159 - 166 | 20 x 2.5 | 25 |
| 115250 | 225 | 249 - 254 | 20 x 2.5 | 25 |
| 115315 | 300 | 314 - 319 | 20 x 2.5 | 25 |
| 115400 | 375 | 399 - 404 | 20 x 2.5 | 25 |

Ramset recommends application tests on-site before commencing use.

TECHNICAL DATA

| | | | |
|--|---|---|--------------------------------------|
| M MATERIAL Galvanised Steel | RUBBER INLAY EPDM | SOUND REDUCTION 18dB(A) | DIMENSION OF SIDE SCREW M6 |
| T TEMPERATURE RESISTANCE -40°C to +110°C | BREAKING LOAD IN TENSION 6000 N (600kg) | SAFE WORKING LOAD IN TENSION 2000 N (200kg) | SOUND PROTECTION DIN 4109 |



SUGGESTED INSTALLATION METHODS:

Threaded Rod Hanger with Heavy Duty Pins pg 24,79

- Choice of bracket to suit application.
- *Pulsa* Gas or Powder Load fixing.
- Suits small to large pipe diameters.
- Use for light to heavy duty loads. (See load data).
- Reduces total installed costs.



Drop-in Anchors (flanged) with Threaded Rod pg 56,82,92

- Installs flush with surface for correct pipe alignment.
- Internally threaded anchor. Range of sizes.
- Double thread, Short rod (M6/M6 or M6/M8) for close to ceiling use.
- Medium to Heavy duty applications.



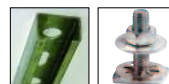
Surface Mounted Plates with Fixings pg 26,57,88

- Overhead, vertical and horizontal mount.
- Close to ceiling welded bolt plate (M10). No threaded rod required.
- Welded nut plate (M8/10). Cut rod length to suit job.
- Install with *Pulsa* Gas or Drill/anchor methods.
- Choice of anchoring method:
 - AnkaScrew 5x30mm Hex.
 - *Pulsa* Gas pins with washer assembly.
 - RediDrive 5x30mm hammer-in anchor.
 - ShureDrive nail-in anchor.



Perforated Channel with Accessories pg 54,57,88

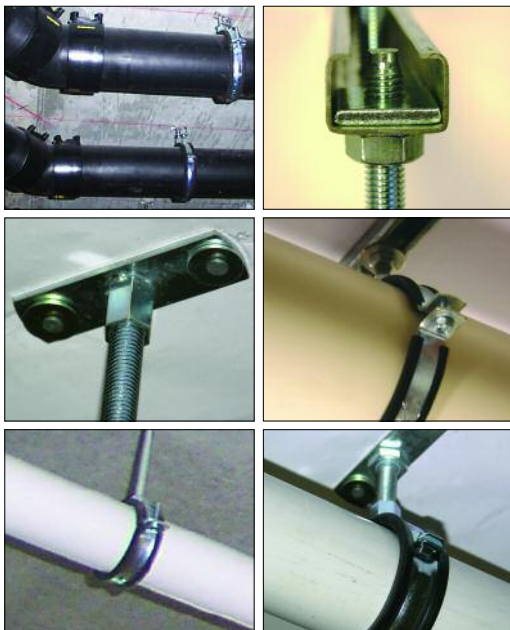
- Choice of ceiling, wall and suspension mounting.
- Less fixings, faster clamp installations.
- Compact, high strength channel for multiple fittings.
 - Rail bolt connector (M10). Screw-on pipe clamp. Push and twist mechanism to locate bolt. Allows longitudinal movement.
 - Rail plate nut (rectangular, M10) Mount threaded rod to channel. Use with Hex nut/washers.
- Fixed and sliding mount positions.
- Choice of anchoring method:
 - AnkaScrew 5x30mm Hex.
 - *Pulsa* Gas pins with washer assembly.
 - *DynaBolt* (M6)



RAPID ISOPHONIC PIPE CLAMP (M8/M10)

Rapid installation of PVC, HDPE, Steel and Copper pipes for medium to heavy duty applications.

- One piece clamp with quick close mechanism. Single screw.
- For pipe outer diameters from 22 to 114mm.
- Choice of close to ceiling, rod suspension or channel mount systems.
- Sound, vibration and electrolysis protection.
- Suits water, drainage, gas and ventilated pipe installations.
- Suits horizontal, vertical and overhead use.

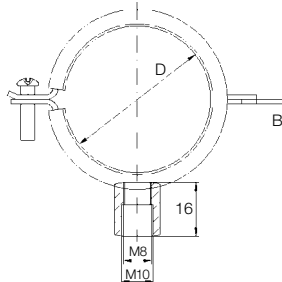


| Order No | Nominal Pipe Diam (mm) | OD Size Range D (mm) | Material Size (mm) | | Order Qty |
|----------|------------------------|----------------------|----------------------|------|-----------|
| | | | A (wide) x B (thick) | Size | |
| 114020 | 20 | 20 - 22 | 20 x 1.5 | 50 | |
| 114025 | 25 | 25 - 27 | 20 x 1.5 | 50 | |
| 114036 | 32 | 36 - 38 | 20 x 1.5 | 25 | |
| 114042 | 40 | 42 - 44 | 20 x 1.5 | 25 | |
| 114052 | 50 | 52 - 54 | 20 x 1.5 | 25 | |
| 114060 | 50 PVC | 56 - 60 | 20 x 1.5 | 25 | |
| 114075 | 65 | 74 - 80 | 20 x 1.5 | 25 | |
| 114090 | 80 | 83 - 91 | 20 x 1.5 | 25 | |
| 114110 | 100 | 108 - 114 | 20 x 1.5 | 25 | |

Ramset recommends application tests on-site before commencing use.

TECHNICAL DATA

| | | | |
|--|---|---|---|
| M MATERIAL Galvanised Steel | RUBBER INLAY EPDM | SOUND REDUCTION 18dB(A) | DIMENSION OF SIDE SCREW M5 x 22 Oscillating |
| T TEMPERATURE RESISTANCE -40°C to +110°C | BREAKING LOAD IN TENSION 2500 N (250kg) | SAFE WORKING LOAD IN TENSION 800 N (80kg) | SOUND PROTECTION DIN 4109 |



SUGGESTED INSTALLATION METHODS:

Threaded Rod Hanger with Heavy Duty Pins pg 24,79

- Choice of bracket to suit application.
- *Pulsa* Gas or Powder Load fixing.
- Suits small to large pipe diameters.
- Use for light to heavy duty loads. (See load data).
- Reduces total installed costs.



Drop-in Anchors (flanged) with Threaded Rod pg 56,82,92

- Installs flush with surface for correct pipe alignment.
- Internally threaded anchor. Range of sizes.
- Double thread, Short rod (M6/M6 or M6/M8) for close to ceiling use.
- Medium to Heavy duty applications.



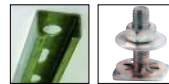
Surface Mounted Plates with Fixings pg 26,57,88

- Overhead, vertical and horizontal mount.
- Close to ceiling welded bolt plate (M10). No threaded rod required.
- Welded nut plate (M8/10). Cut rod length to suit job.
- Install with *Pulsa* Gas or Drill/anchor methods.
- Choice of anchoring method:
 - AnkaScrew 5x30mm Hex.
 - *Pulsa* Gas pins with washer assembly.
 - RediDrive 5x30mm hammer-in anchor.
 - ShureDrive nail-in anchor.



Perforated Channel with Accessories pg 54,57,88

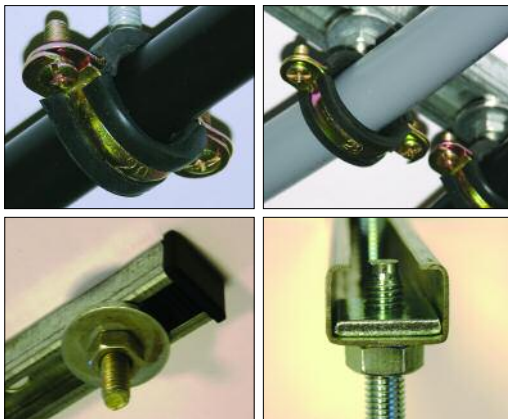
- Choice of ceiling, wall and suspension mounting.
- Less fixings, faster clamp installations.
- Compact, high strength channel for multiple fittings.
 - Rail bolt connector (M10). Screw-on pipe clamp. Push and twist mechanism to locate bolt. Allows longitudinal movement.
 - Rail plate nut (rectangular, M10) Mount threaded rod to channel. Use with Hex nut/washers.
- Fixed and sliding mount positions.
- Choice of anchoring method:
 - AnkaScrew 5x30mm Hex.
 - *Pulsa* Gas pins with washer assembly.
 - *DynaBolt* (M6)




RAPID ISOPHONIC PIPE CLAMP (M6)

Rapid installation of PVC, Plastic and Copper pipes in light to medium duty applications.

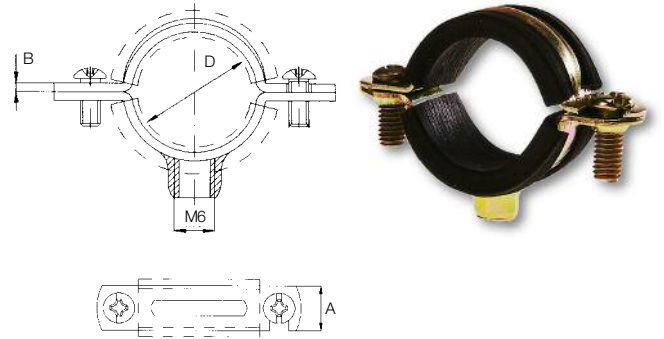
- Choice of close to ceiling, rod suspension or channel mount systems.
- For pipe outer diameters from 12 to 60mm.
- Suits high pressure water, ventilation, gas and drainage pipes.
- Sound, vibration and electrolysis protection.
- Suits horizontal, vertical and overhead.
- Two piece clamp with quick close mechanism.



| Order No | Pipe Size D ø (OD) (mm) | Material Size (mm) A (wide) x B (thick) |  Order Qty |
|----------|----------------------------|--|--|
| 134012 | 12 | 12 x 1.2 | 100 |
| 134016 | 16 | 12 x 1.2 | 100 |
| 134020 | 20 | 12 x 1.2 | 100 |
| 134026 | 26 | 12 x 1.2 | 100 |
| 134032 | 32 | 12 x 1.2 | 50 |
| 134035 | 35 | 12 x 1.2 | 50 |
| 134042 | 42 | 15 x 1.2 | 50 |
| 134054 | 54 | 15 x 1.2 | 25 |
| 134060 | 60 | 15 x 1.2 | 25 |

TECHNICAL DATA

| | | | |
|--|---|---|--------------------------------------|
| M MATERIAL Yellow Zinc Plate | RUBBER INLAY EPDM | SOUND REDUCTION 12dB(A) | DIMENSION OF SIDE SCREW M5 |
| T TEMPERATURE RESISTANCE -40°C to +110°C | BREAKING LOAD IN TENSION 2000 N (200kg) | SAFE WORKING LOAD IN TENSION 700 N (70kg) | SOUND PROTECTION DIN 4109 |



SUGGESTED INSTALLATION METHODS:

Drop-in flanged anchor (M6) with threaded rod pg 56,82,92

- Installs flush with surface for correct pipe alignment.
- Internally threaded anchor. High strength.
- Small hole drilling for fast installation.
- Double thread, short rod (M6/M6) for close to ceiling use.



Perforated Channel with accessories pg 26,54,57,88

- Choice of ceiling, wall and suspension mounting.
- Less fixings, faster clamp installations.
- Compact, high strength channel for multiple fittings.
- Rail bolt connector (M6). Screw-on pipe clamp. Push and twist mechanism to locate bolt. Longitudinal movement along rail.
- Rail plate nut (rectangular, M10). Mount threaded rod to channel. Use with Hex nut/washers.
- Fixed and sliding mount positions.
- Choice of anchoring method:
 - AnkaScrew 5x30mm Hex.
 - Palsa Gas pins with washer assembly.
 - DynaBolt (M6)



Ramset recommends application tests on-site before commencing use.

PIPE SUSPENSION SYSTEMS

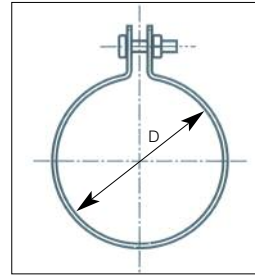
BAND CLAMP

For PVC and Plastic pipes where a Light to Medium Duty installation is required.

- One piece wraparound clamp.
- Close to ceiling, rod suspension and channel mount systems.
- Horizontal, vertical, and overhead.
- Suits, waste, water, drainage and gas pipes.
- Plastic coated finish.



| Order No | Nominal Pipe Diam (mm) | OD Size Range D (mm) | Material Size (mm) A (wide) x B (thick) | Order Qty |
|----------|------------------------|----------------------|---|-----------|
| BC040 | 40 | 43 | 20 x 2 | 20 |
| BC050 | 50 | 56 | 20 x 2 | 20 |
| BC065 | 65 | 69 | 20 x 2 | 20 |
| BC080 | 80 | 83 | 20 x 2 | 20 |
| BC100 | 100 | 110 | 20 x 2 | 20 |
| BC150 | 150 | 160 | 20 x 2 | 20 |



SUGGESTED INSTALLATION METHODS:

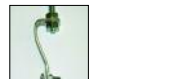
Surface mounted bracket with fixings pg 26,57,88

- Close to surface mounting.
- Install with Pulsa Gas or drill/anchor methods.
- Choice of bracket mount systems:
 - T-Bracket with clamp or hanging strap.
 - Welded bolt plate (M10) with threaded eye coupling.
 - Welded nut plate (M8/10) with rod and eye coupling.
- Choice of anchoring methods:
 - AnkaScrew 5x30 hex.
 - Pulsa Gas pins with washer assembly.
 - RediDrive 5x30 hammer-in anchor.
 - ShureDrive nail-in anchor.



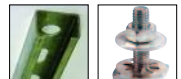
Hanging Straps and Couplings pg 57,85

- Rod suspension with threaded eye coupling and flanged drop-in anchor.
- Vertical installations with hanging strap and mechanical anchors.



Channel Mount with Accessories pg 54,57

- Overhead, vertical or suspension mounting.
- Compact, high strength channel for multiple fittings.
- Rail bolt connector (M10 or M6) with threaded eye coupling.
- Rail plate nut (rectangular M10) for additional rod suspension options.
- Choose channel anchors to suit the application.



Ramset recommends application tests on-site before commencing use.

SPRINKLER PIPE SYSTEMS

SPRINKLER PIPE CLAMP

- Rod suspension, close to ceiling or channel mount installation.
- One piece wraparound clamp.
- Suitable for fire sprinkler pipes.
- Use for insulated pipes where oversized fittings are required.
- "Pear shaped" for correct fit off and height adjustment from below.



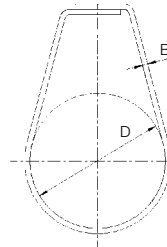
| Order No | Pipe Size ϕ D (OD) (mm) | Material Size (mm) A (wide) x B (thick) | Order Qty |
|----------|------------------------------|---|-----------|
| 117035 | 35 | 25 x 1.0 | 100 |
| 117040 | 42 | 25 x 1.2 | 100 |
| 117060 | 60 | 25 x 1.2 | 100 |
| 117075 | 75 | 25 x 1.2 | 100 |
| 117090 | 90 | 25 x 1.2 | 50 |
| 117115 | 115 | 25 x 1.2 | 25 |
| 117160 | 165 | 25 x 2.0 | 25 |

TECHNICAL CHARACTERISTICS

| Diameter (OD) (mm) | Breaking Load in Tension (kg) | Maximum Load in Tension (kg) |
|--------------------|-------------------------------|------------------------------|
| 26 - 60 | 1,350 | 450 |
| 75 - 115 | 2,200 | 733 |
| 140 - 160 | 2,600 | 866 |

TECHNICAL DATA

| M | MATERIAL | HOT ROLLED, LOW CARBON STEEL | DIMENSIONS OF STEEL |
|---|------------------|------------------------------|------------------------------------|
| | Galvanised Steel | EN10051 | Width: 25mm Thickness: 1 to 2mm |



SUGGESTED INSTALLATION METHODS:

Drop-in Anchors with Threaded Rod pg 82,92

- Fire rated (M10 x 30) flanged and (M12 x 50) straight.
- Install flush with surface for correct pipe alignment.
- Internally threaded anchor. Range of sizes.
- Medium to Heavy duty applications.



Threaded Rod Hanger with Heavy Duty Pins pg 24,79

- Choice of bracket to suit application. (See load data tables)
- *Pulsa* Gas or Powder Load fixing.
- Suits small to medium pipe diameters.



Surface Mounted Plates with Fixings pg 57,86,88

- Close to ceiling welded bolt plate (M10). No threaded rod required.
- Welded nut plate (M8/10). Cut rod length to suit job.
- Install with *Pulsa* Gas or Drill/anchor methods.
- Choice of anchoring method:
 - AnkaScrew 5x30mm Hex. (Fire Rated)
 - RediDrive 5x30mm hammer-in anchor. (Fire Rated)



Perforated Channel with Accessories pg 54,57

- Choice of ceiling, wall and suspension mounting.
- Less fixings, faster clamp installations.
- Compact, high strength channel for multiple fittings.
 - Rail bolt connector (M10 or M6) to fit pipe clamps. Push and twist mechanism to locate bolt and allow longitudinal movement along rail.
 - Rail plate nut (rectangular, M10 thread) for mounting of threaded rods to channel. Use with Hex nut/washers.
- Fixed and sliding mount positions.
- Choice of anchoring method:
 - AnkaScrew 5x30mm Hex. (Fire Rated)
 - *DynaBolt* (M6)



Ramset recommends application tests on-site before commencing use.