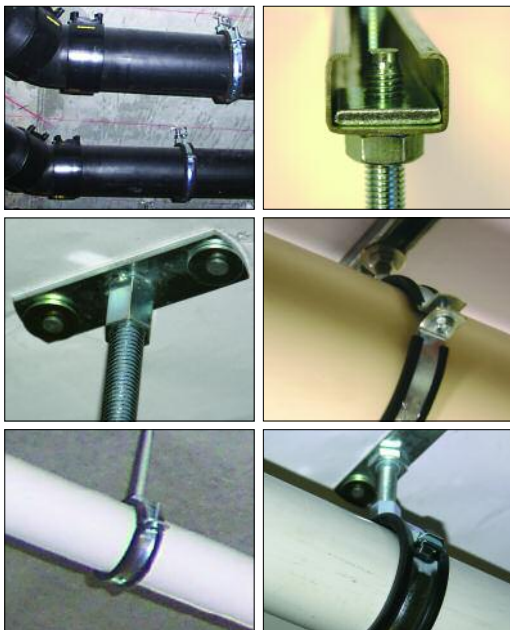


RAPID ISOPHONIC PIPE CLAMP (M8/M10)

Rapid installation of PVC, HDPE, Steel and Copper pipes for medium to heavy duty applications.

- One piece clamp with quick close mechanism. Single screw.
- For pipe outer diameters from 22 to 114mm.
- Choice of close to ceiling, rod suspension or channel mount systems.
- Sound, vibration and electrolysis protection.
- Suits water, drainage, gas and ventilated pipe installations.
- Suits horizontal, vertical and overhead use.

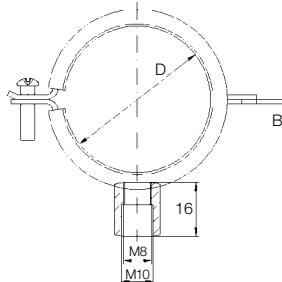


Order No	Nominal Pipe Diam (mm)	OD Size Range D (mm)	Material Size (mm)		Order Qty
			A (wide) x B (thick)	Size	
114020	20	20 - 22	20 x 1.5	50	
114025	25	25 - 27	20 x 1.5	50	
114036	32	36 - 38	20 x 1.5	25	
114042	40	42 - 44	20 x 1.5	25	
114052	50	52 - 54	20 x 1.5	25	
114060	50 PVC	56 - 60	20 x 1.5	25	
114075	65	74 - 80	20 x 1.5	25	
114090	80	83 - 91	20 x 1.5	25	
114110	100	108 - 114	20 x 1.5	25	

Ramset recommends application tests on-site before commencing use.

TECHNICAL DATA

M MATERIAL Galvanised Steel	RUBBER INLAY EPDM	SOUND REDUCTION 18dB(A)	DIMENSION OF SIDE SCREW M5 x 22 Oscillating
T TEMPERATURE RESISTANCE -40°C to +110°C	BREAKING LOAD IN TENSION 2500 N (250kg)	SAFE WORKING LOAD IN TENSION 800 N (80kg)	SOUND PROTECTION DIN 4109



SUGGESTED INSTALLATION METHODS:

Threaded Rod Hanger with Heavy Duty Pins pg 24,79

- Choice of bracket to suit application.
- *Pulsa* Gas or Powder Load fixing.
- Suits small to large pipe diameters.
- Use for light to heavy duty loads. (See load data).
- Reduces total installed costs.



Drop-in Anchors (flanged) with Threaded Rod pg 56,82,92

- Installs flush with surface for correct pipe alignment.
- Internally threaded anchor. Range of sizes.
- Double thread, Short rod (M6/M6 or M6/M8) for close to ceiling use.
- Medium to Heavy duty applications.



Surface Mounted Plates with Fixings pg 26,57,88

- Overhead, vertical and horizontal mount.
- Close to ceiling welded bolt plate (M10). No threaded rod required.
- Welded nut plate (M8/10). Cut rod length to suit job.
- Install with *Pulsa* Gas or Drill/anchor methods.
- Choice of anchoring method:
 - AnkaScrew 5x30mm Hex.
 - *Pulsa* Gas pins with washer assembly.
 - RediDrive 5x30mm hammer-in anchor.
 - ShureDrive nail-in anchor.



Perforated Channel with Accessories pg 54,57,88

- Choice of ceiling, wall and suspension mounting.
- Less fixings, faster clamp installations.
- Compact, high strength channel for multiple fittings.
 - Rail bolt connector (M10). Screw-on pipe clamp. Push and twist mechanism to locate bolt. Allows longitudinal movement.
 - Rail plate nut (rectangular, M10) Mount threaded rod to channel. Use with Hex nut/washers.
- Fixed and sliding mount positions.
- Choice of anchoring method:
 - AnkaScrew 5x30mm Hex.
 - *Pulsa* Gas pins with washer assembly.
 - *DynaBolt* (M6)

